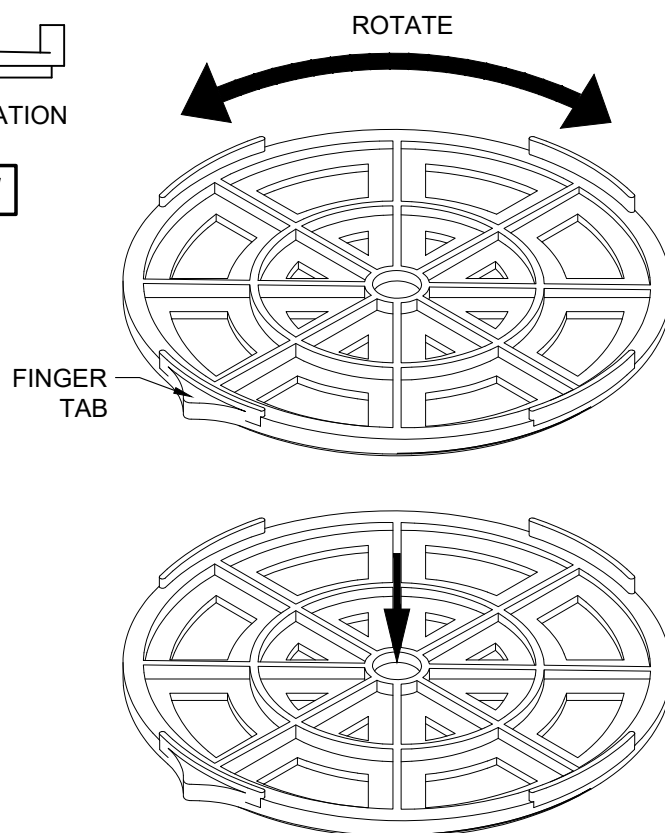
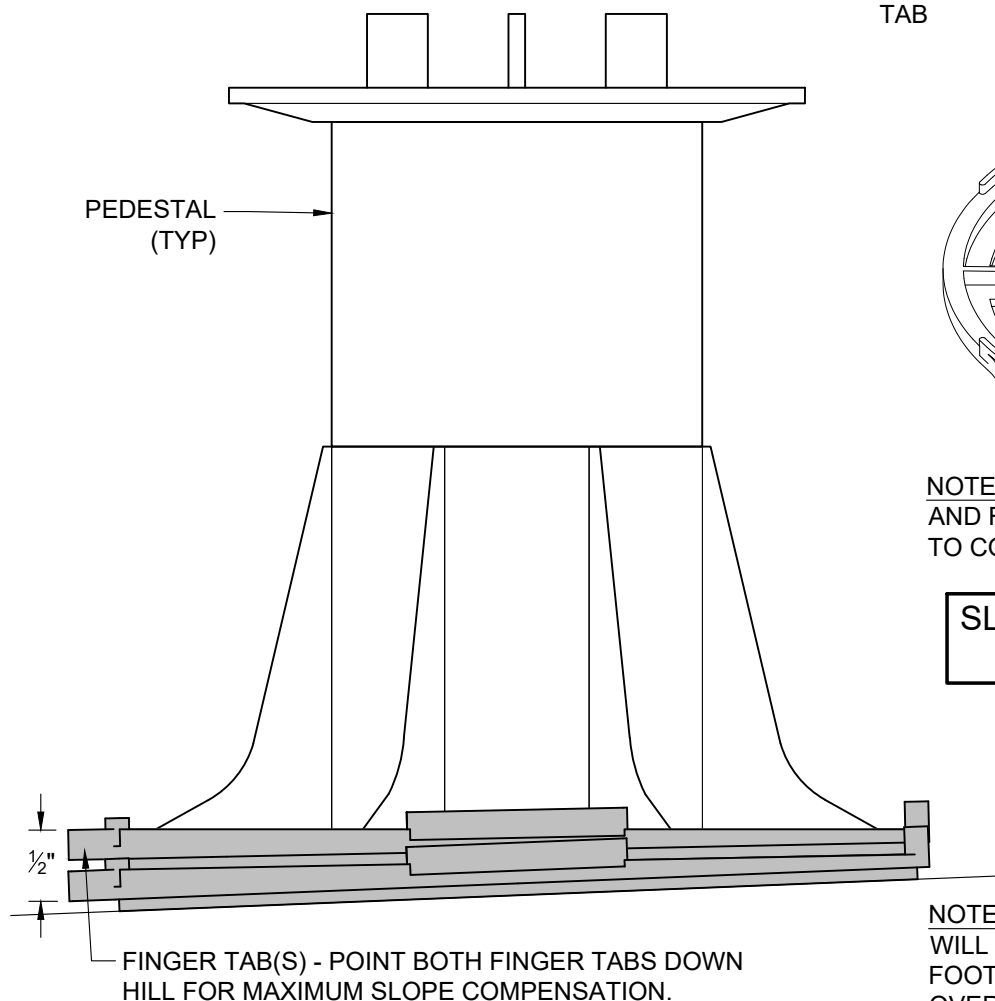


SLOPE COMPENSATION UNIT PROFILE VIEW



NOTE: STACK SLOPE COMPENSATION UNITS AND ROTATE IN RELATION TO EACH OTHER TO COMPENSATE FOR A RANGE OF SLOPE.

SLOPE COMPENSATION UNIT ISOMETRIC VIEWS



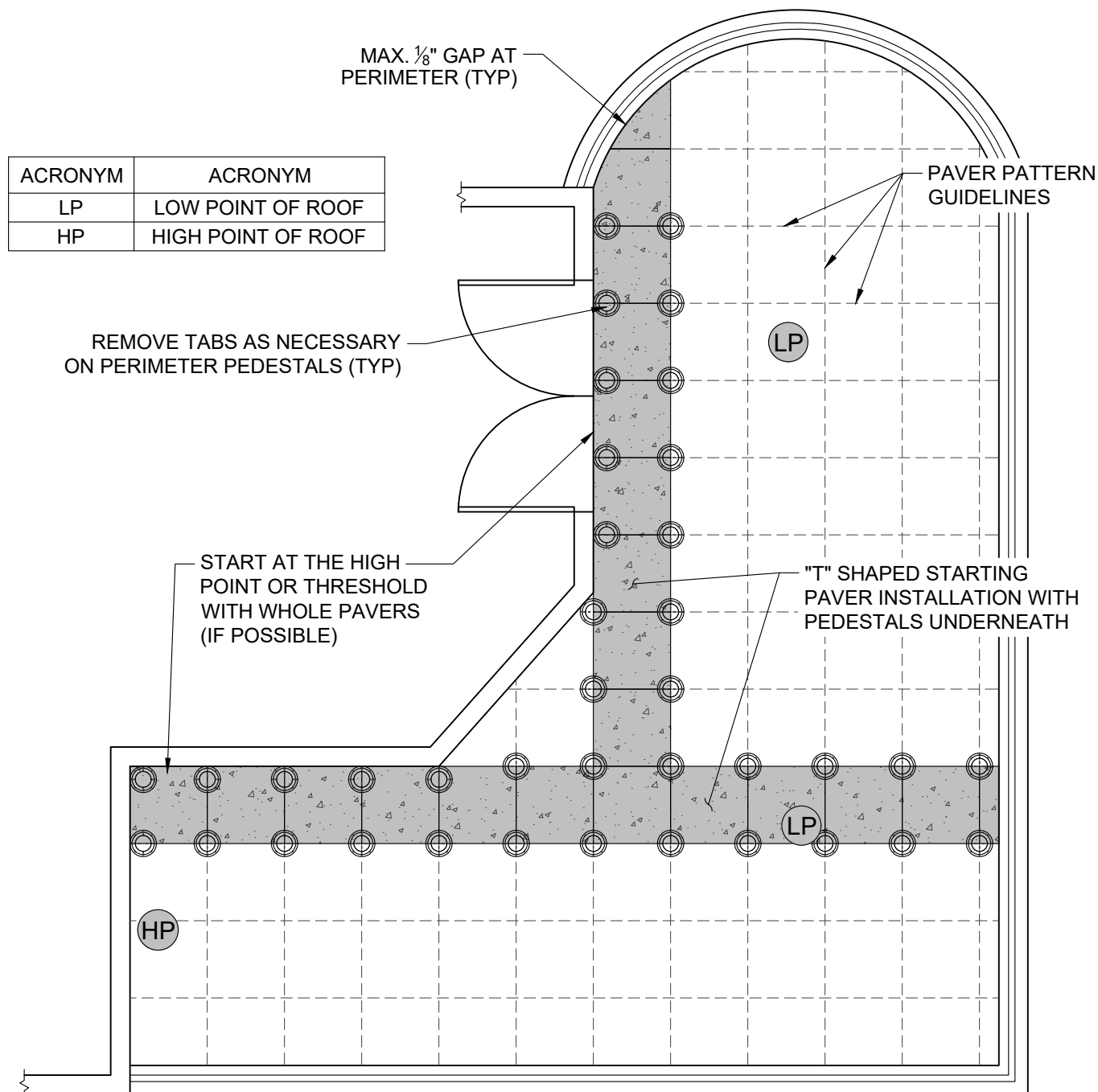
SLOPE COMPENSATION UNITS W/ PEDESTAL

NOTE: EACH SLOPE COMPENSATION UNIT WILL COMPENSATE FOR UP TO $\frac{1}{4}$ " PER FOOT OF SLOPE (2%) AND ADD $\frac{3}{8}$ " TO THE OVERALL HEIGHT OF A PEDESTAL. A MAXIMUM OF 4 SLOPE COMPENSATION UNITS MAY BE STACKED BELOW A PEDESTAL IN ORDER TO COMPENSATE FOR SLOPES FROM 0" TO 1" PER FOOT (0-8%).

GENERAL NOTES: APPLY TO ALL OF THE ABOVE PRODUCTS:

1. INSTALLATION MUST BE COMPLETED IN ACCORDANCE WITH MANUFACTURER SPECIFICATIONS.
2. DRAWINGS NOT TO SCALE.
3. CONTRACTOR'S NOTE: FOR PRODUCT AND COMPANY INFORMATION VISIT: www.belgardcommercial.com

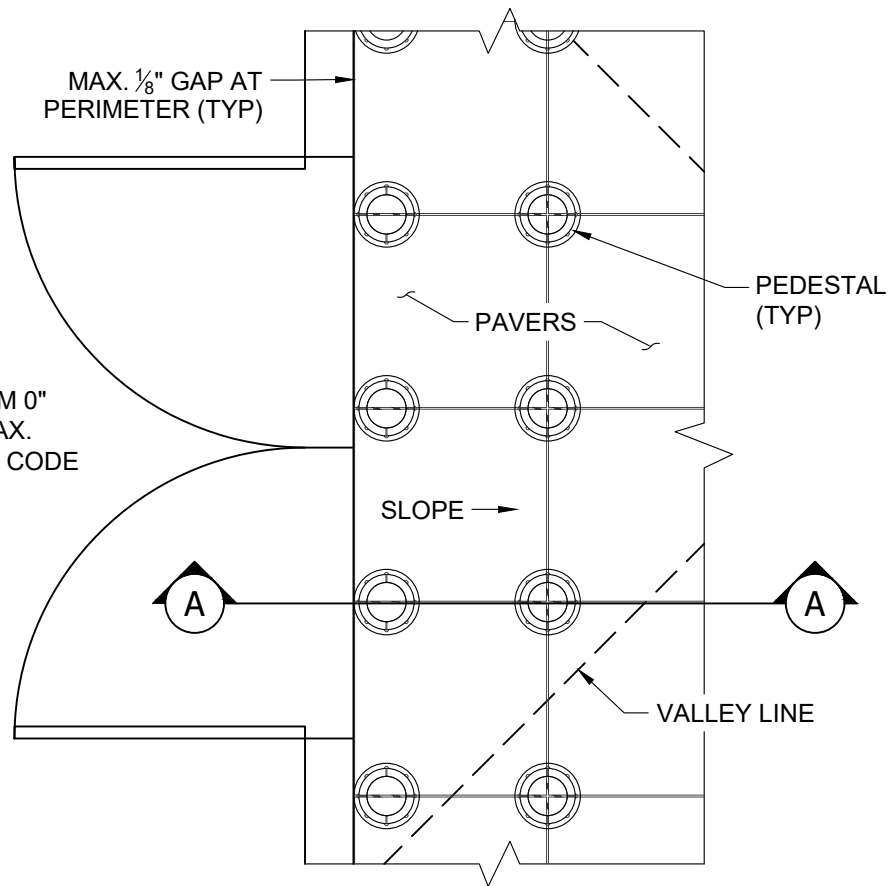
"T" METHOD: DETERMINE CAVITY HEIGHT AT ALL THRESHOLDS, DRAINS AND HIGH POINTS. DEDUCT THE THICKNESS OF THE DECKING MATERIAL FROM THE MEASURED DISTANCE BETWEEN THE TOP OF THE MEMBRANE AND THE TOP OF THE DECKING MATERIAL TO DETERMINE THE PEDESTAL HEIGHT AND MODELS NEEDED FOR EACH LOCATION. USE A "LASER LEVEL" TO MARK THE TOP OF PEDESTAL ELEVATION AROUND THE DECK. PLAN PAVER/PEDESTAL LAYOUT PATTERN BEFORE STARTING, BY MAKING GUIDELINES ON THE ROOF IF NEEDED. USING THE GUIDELINES INSTALL A "T" SHAPED PORTION OF THE NEW DECK STARTING FROM THE THRESHOLD (OR HIGH POINT). DECKING ON BOTH ROWS OF THE "T" SHOULD BE ADJUSTED TO THE CORRECT HEIGHT AND LEVELED BEFORE PROCEEDING. INSTALLATION ON ALL SIDES OF THE "T" CAN THEN PROCEED AT THE SAME TIME.



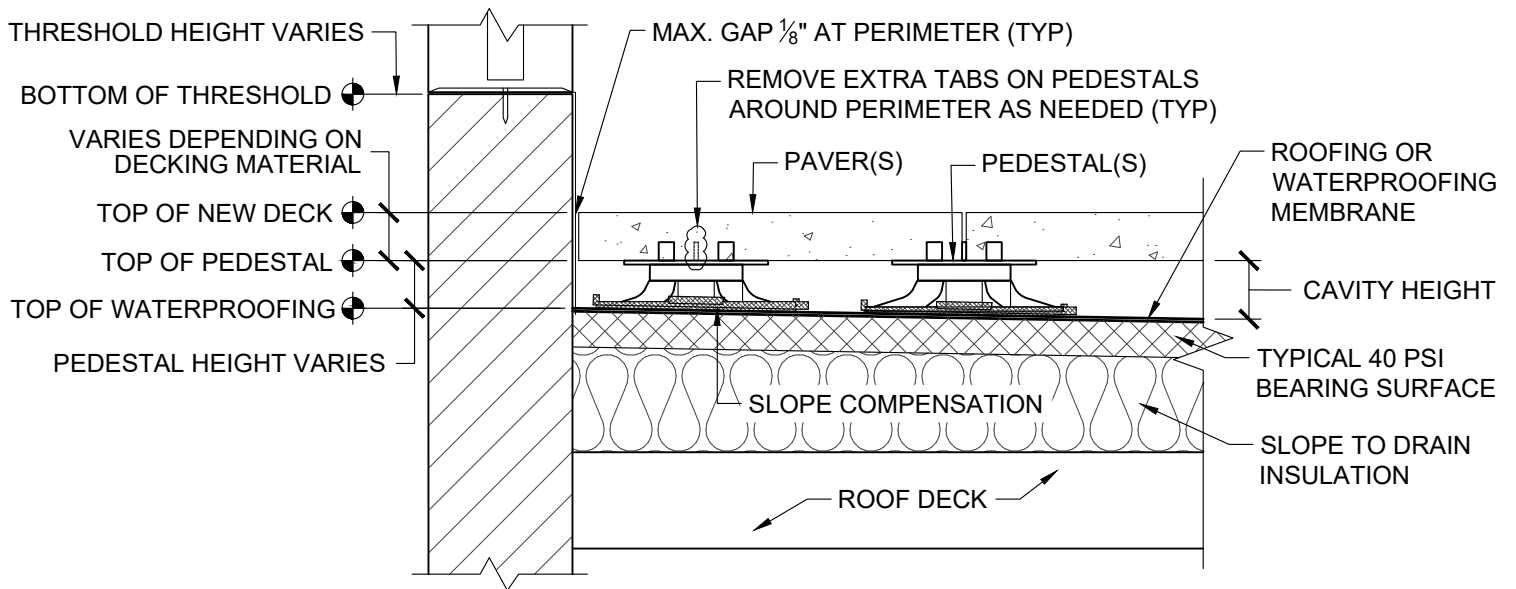
GENERAL NOTES: APPLY TO ALL OF THE ABOVE PRODUCTS:

1. INSTALLATION MUST BE COMPLETED IN ACCORDANCE WITH MANUFACTURER SPECIFICATIONS.
2. DRAWINGS NOT TO SCALE.
3. CONTRACTOR'S NOTE: FOR PRODUCT AND COMPANY INFORMATION VISIT: www.belgardcommercial.com

NOTE: STEP DOWN VARIES FROM 0"
FOR ADA ACCESSIBILITY TO MAX.
ALLOWABLE RISER HEIGHT PER CODE

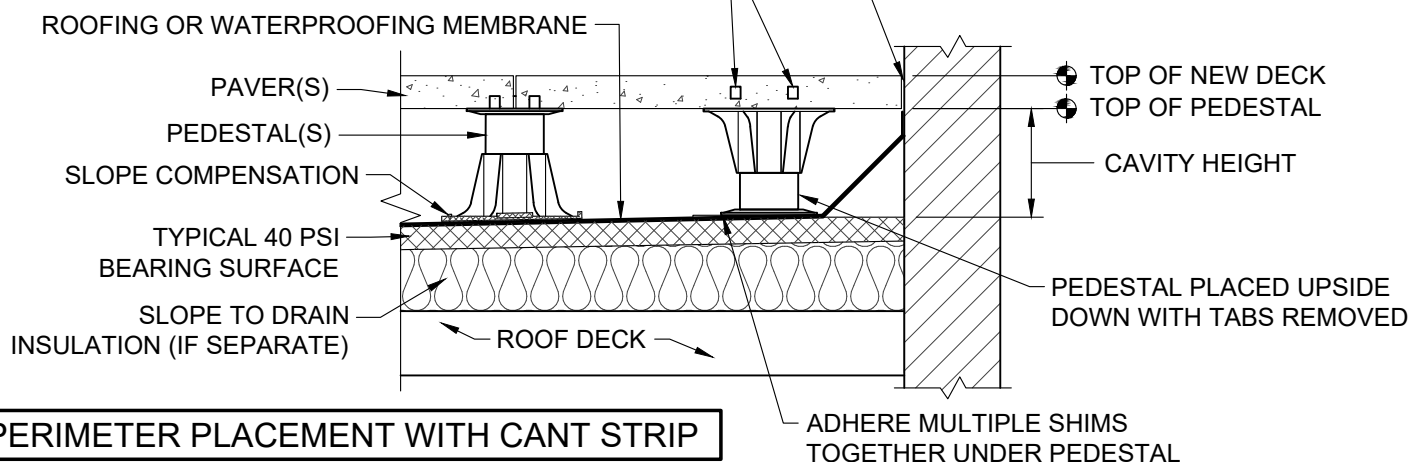


THRESHOLD PEDESTAL PLACEMENT PLAN VIEW

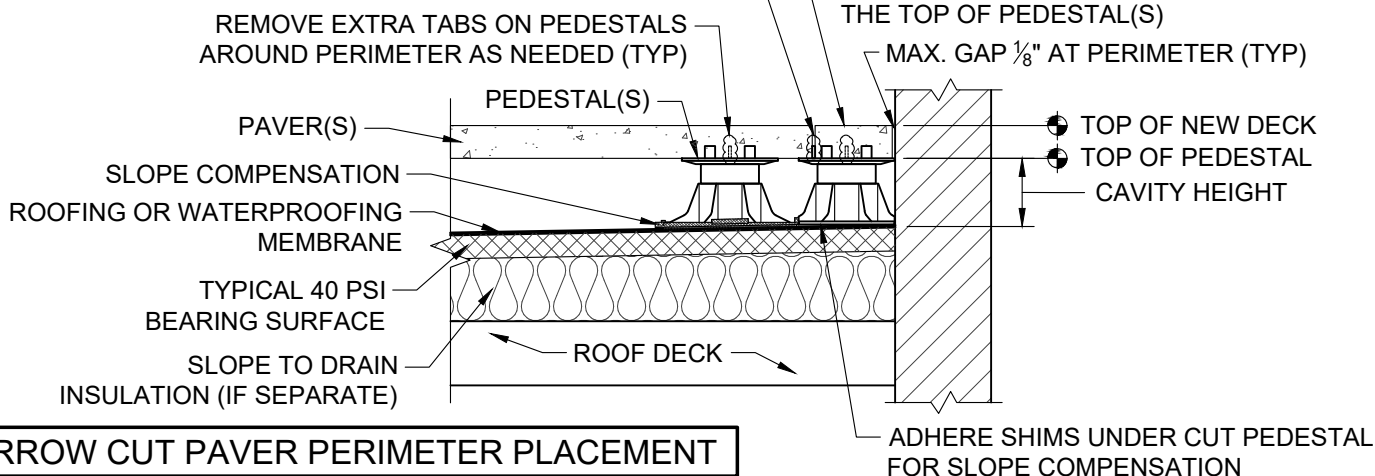


THRESHOLD PEDESTAL PLACEMENT SECTION A-A

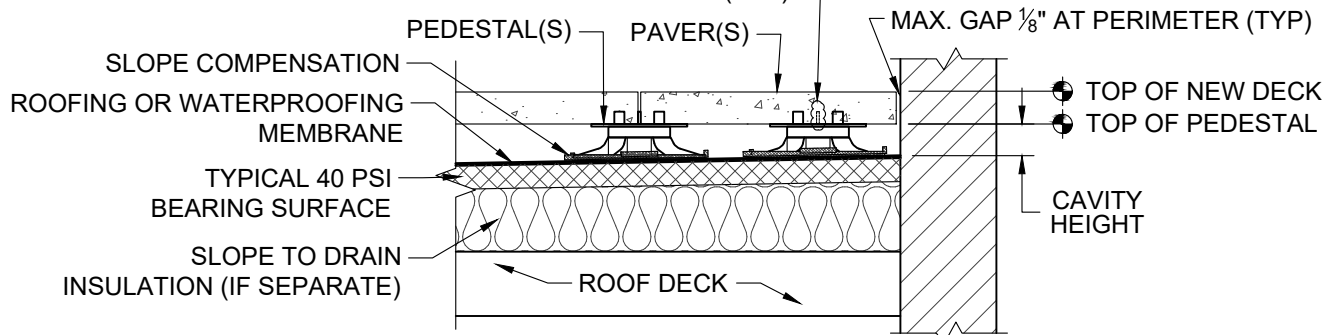
RE-INSERT REMOVED TABS AND ADHERE IN BETWEEN PAVERS TO MAINTAIN SPACING (TYP). SEE NOTE 4.



RE-INSERT REMOVED TABS AND ADHERE IN BETWEEN PAVERS TO MAINTAIN SPACING (TYP). SEE NOTE 4.



REMOVE EXTRA TABS ON PEDESTALS AROUND PERIMETER AS NEEDED (TYP)



GENERAL NOTES: APPLY TO ALL OF THE ABOVE PRODUCTS:

1. INSTALLATION MUST BE COMPLETED IN ACCORDANCE WITH MANUFACTURER SPECIFICATIONS.
2. DRAWINGS NOT TO SCALE.
3. CONTRACTOR'S NOTE: FOR PRODUCT AND COMPANY INFORMATION VISIT: www.belgardcommercial.com
4. "ADHERE" - INSTALLER MUST ADHERE WITH POLYURETHANE CONSTRUCTION ADHESIVE.



belgardcommercial.com

This drawing is for illustrative purposes only and should not be used for construction without the signature of a registered professional engineer.

BELGARD PEDESTAL DETAILS

PERIMETER PLACEMENT

Scale:

N.T.S.

Drawing number:

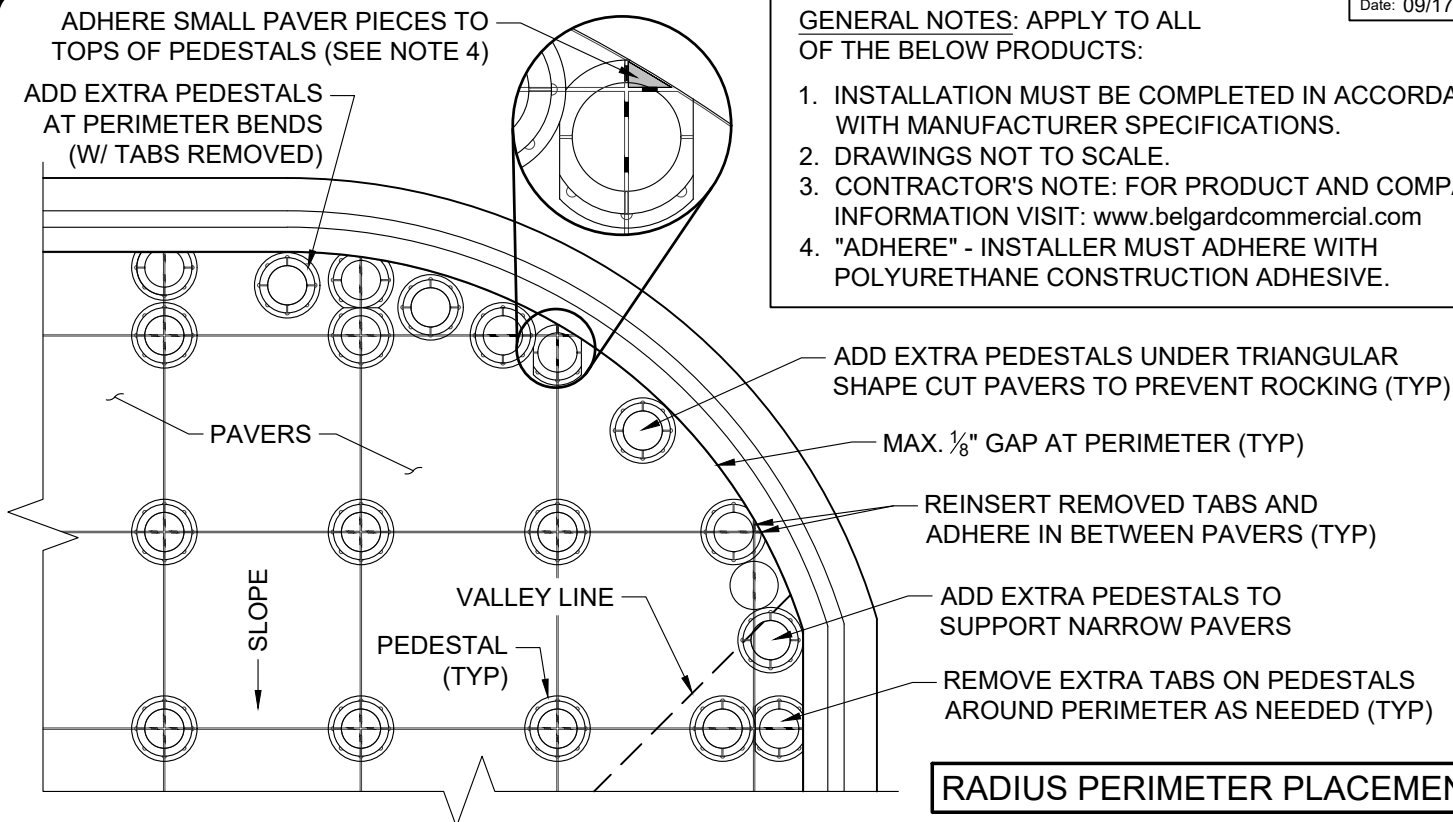
BP04

ADHERE SMALL PAVER PIECES TO
TOPS OF PEDESTALS (SEE NOTE 4)

ADD EXTRA PEDESTALS
AT PERIMETER BENDS
(W/ TABS REMOVED)

GENERAL NOTES: APPLY TO ALL
OF THE BELOW PRODUCTS:

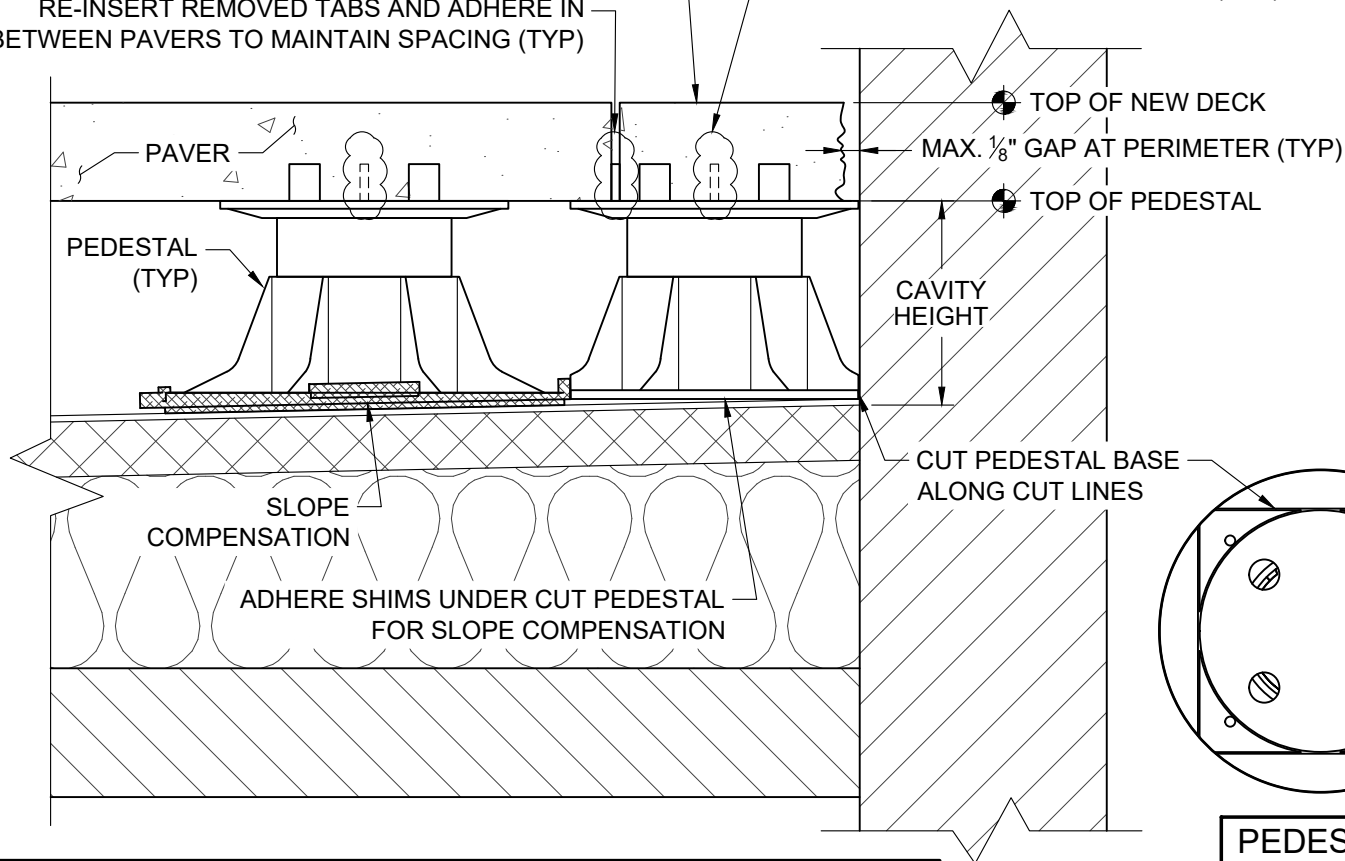
1. INSTALLATION MUST BE COMPLETED IN ACCORDANCE WITH MANUFACTURER SPECIFICATIONS.
2. DRAWINGS NOT TO SCALE.
3. CONTRACTOR'S NOTE: FOR PRODUCT AND COMPANY INFORMATION VISIT: www.belgardcommercial.com
4. "ADHERE" - INSTALLER MUST ADHERE WITH POLYURETHANE CONSTRUCTION ADHESIVE.



RADIUS PERIMETER PLACEMENT

ADHERE SMALL CUT PAVERS TO PEDESTAL(S)
RE-INSERT REMOVED TABS AND ADHERE IN
BETWEEN PAVERS TO MAINTAIN SPACING (TYP)

REMOVE EXTRA TABS ON PEDESTALS
AROUND PERIMETER AS NEEDED (TYP)



NARROW & SMALL CUT PAVER PERIMETER PLACEMENT

**PEDESTAL
BASE VIEW**



belgardcommercial.com

This drawing is for
illustrative purposes only
and should not be used for
construction without the
signature of a registered
professional engineer.

BELGARD PEDESTAL DETAILS

RADIUS PERIMETER PLACEMENT

Scale:

N.T.S.

Drawing number:

BP05

GENERAL NOTES: APPLY TO ALL OF THE BELOW PRODUCTS:

1. INSTALLATION MUST BE COMPLETED IN ACCORDANCE WITH MANUFACTURER SPECIFICATIONS.
2. DRAWINGS NOT TO SCALE.
3. CONTRACTOR'S NOTE: FOR PRODUCT AND COMPANY INFORMATION VISIT: www.belgardcommercial.com
4. "ADHERE" - INSTALLER MUST ADHERE WITH POLYURETHANE CONSTRUCTION ADHESIVE.

ADD ADDITIONAL PEDESTALS AS NEEDED TO ADEQUATELY SUPPORT PAVERS

ADD EXTRA PEDESTALS UNDER TRIANGULAR SHAPE CUT PAVERS TO PREVENT ROCKING (TYP)

MAX. $\frac{1}{8}$ " GAP AT PERIMETER (TYP)

REMOVE EXTRA TABS ON PEDESTALS AROUND PERIMETER AS NEEDED (TYP)

SLOPE

CUT PEDESTAL BASES, ON CUT LINES (SEE BELOW), AS NEEDED TO FIT AROUND PERIMETER

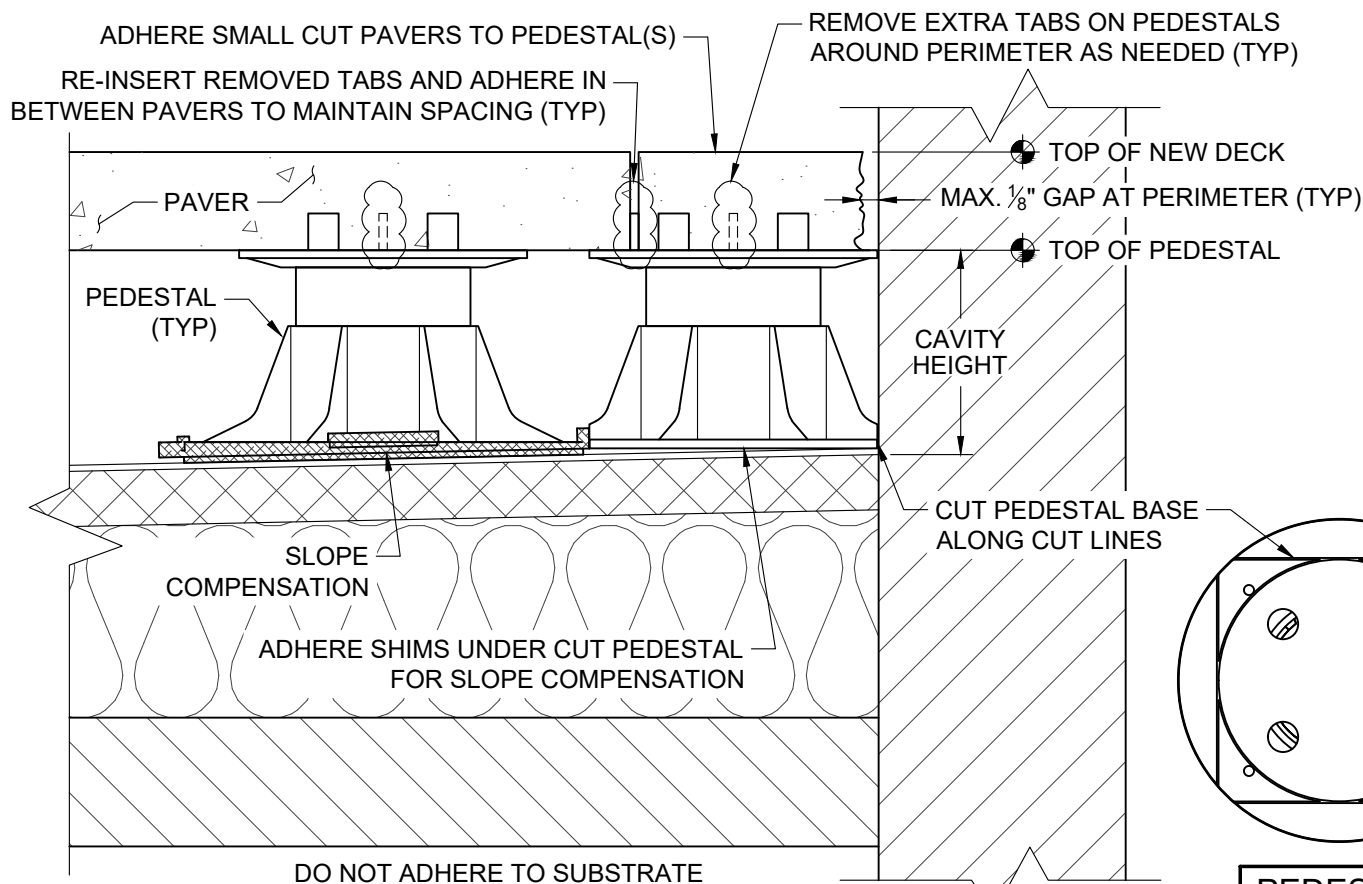
PAVERS

RIDGE LINE

VALLEY LINE

PEDESTAL (TYP)

DIAGONAL PERIMETER PLACEMENT



NARROW & SMALL CUT PAVER PERIMETER PLACEMENT

PEDESTAL BASE VIEW



belgardcommercial.com

This drawing is for illustrative purposes only and should not be used for construction without the signature of a registered professional engineer.

BELGARD PEDESTAL DETAILS
DIAGONAL PERIMETER PLACEMENT

Scale:

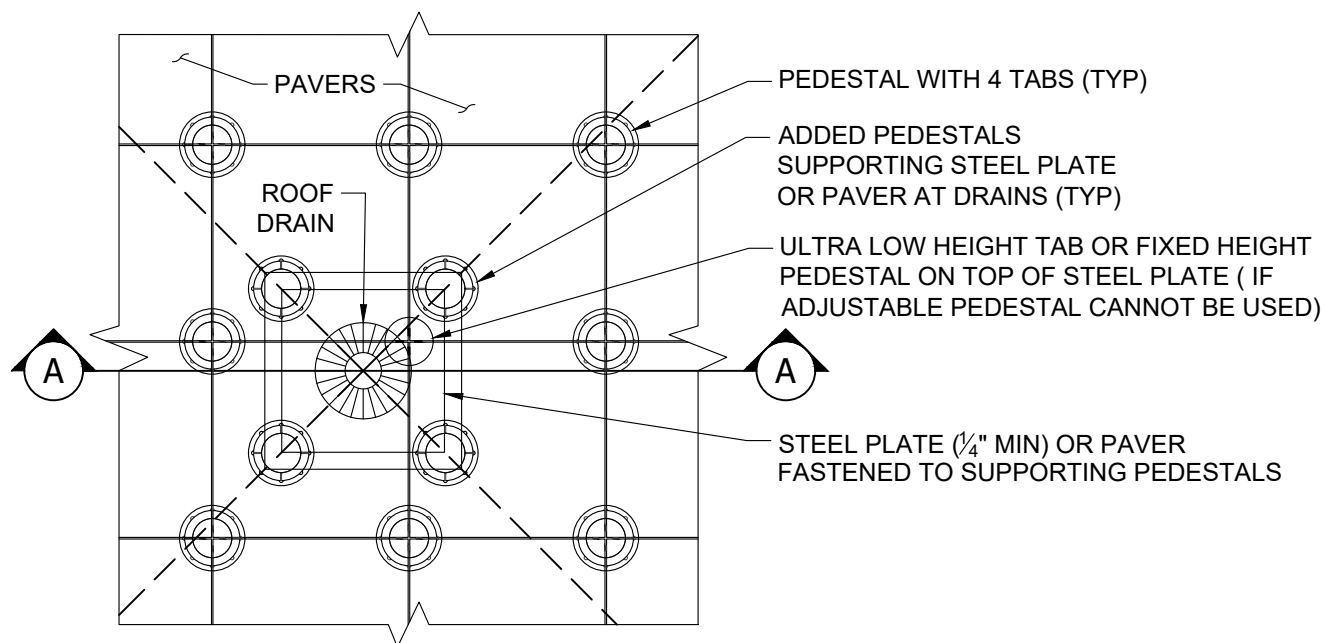
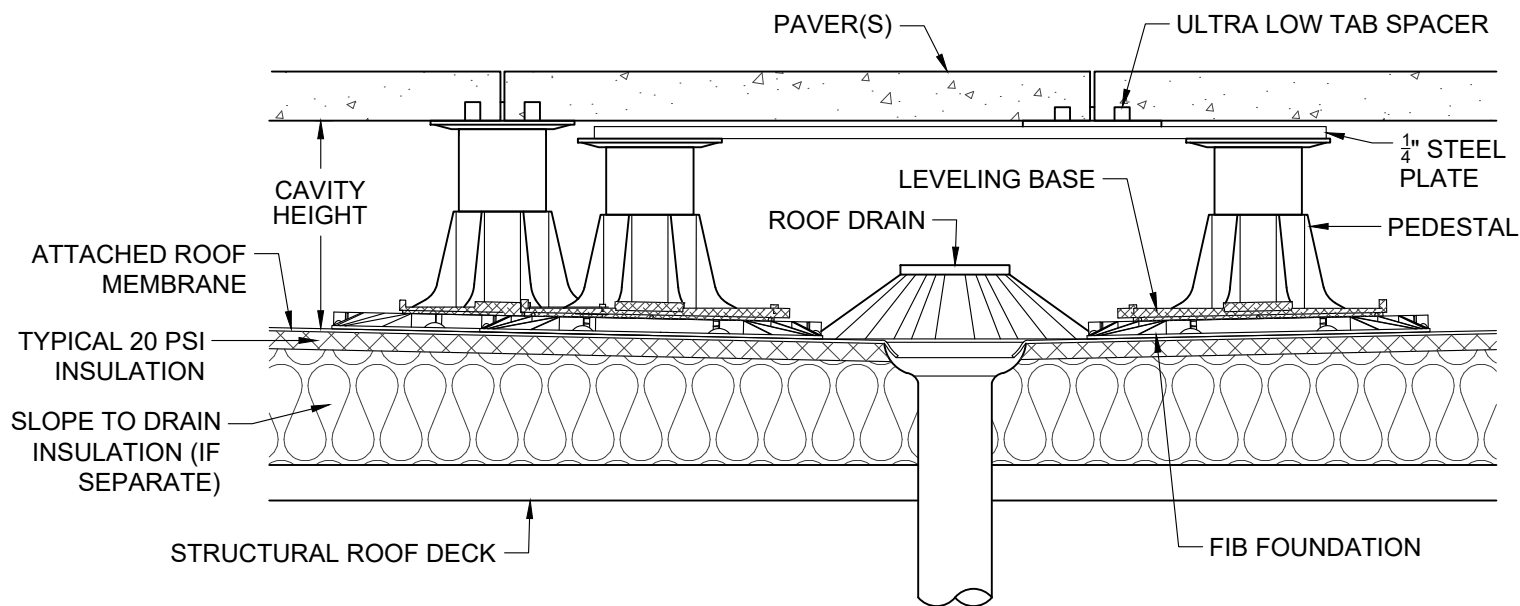
N.T.S.

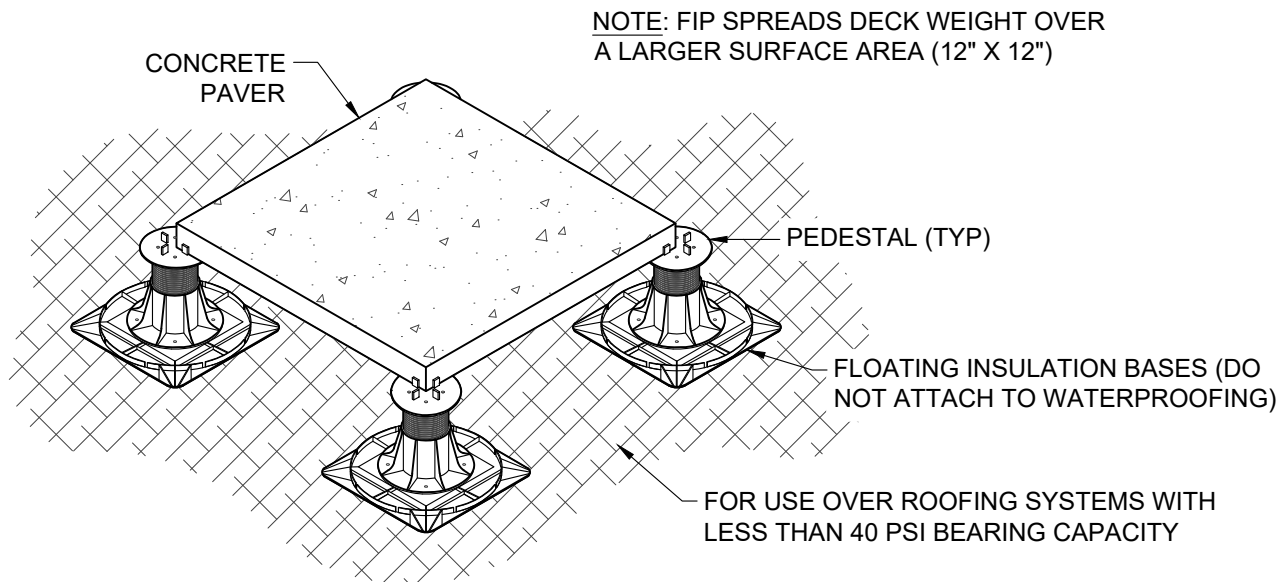
Drawing number:

BP06

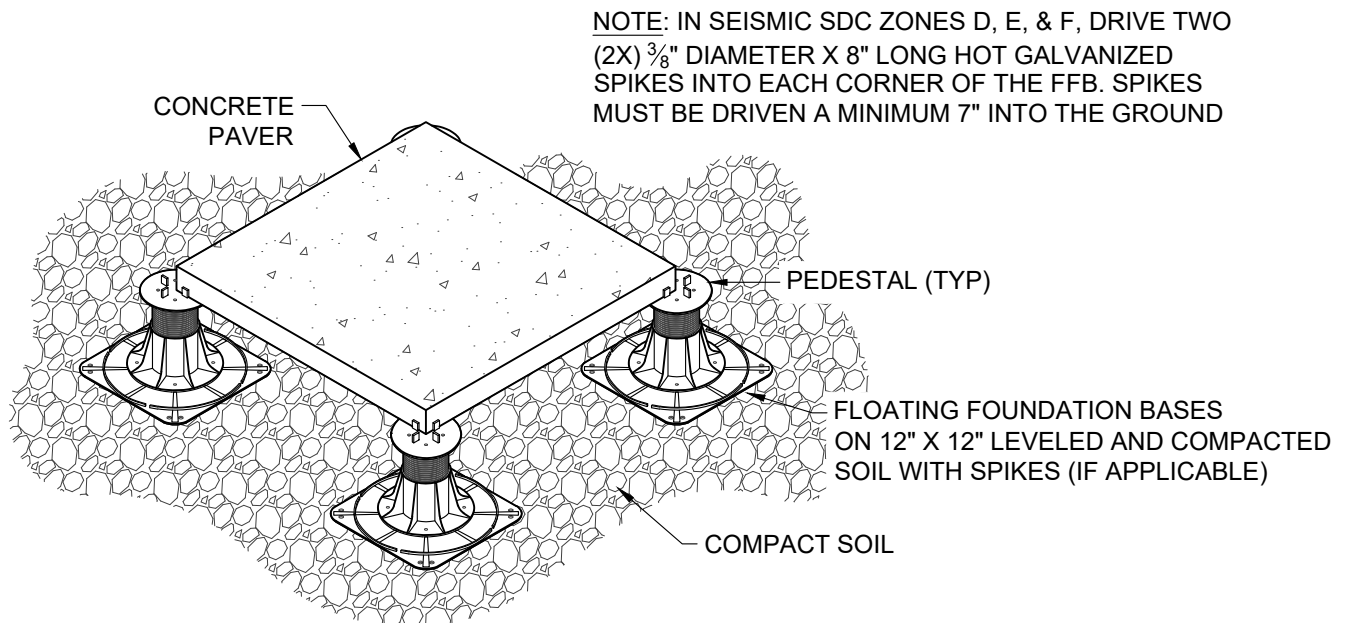
GENERAL NOTES: APPLY TO ALL OF THE BELOW PRODUCTS:

1. INSTALLATION MUST BE COMPLETED IN ACCORDANCE WITH MANUFACTURER SPECIFICATIONS.
2. DRAWINGS NOT TO SCALE.
3. CONTRACTOR'S NOTE: FOR PRODUCT AND COMPANY INFORMATION VISIT: www.belgardcommercial.com

**DRAIN PEDESTAL PLACEMENT PLAN VIEW****DRAIN PEDESTAL PLACEMENT SECTION A-A**



PEDESTALS ON FIBs (FLOATING INSULATION BASES)



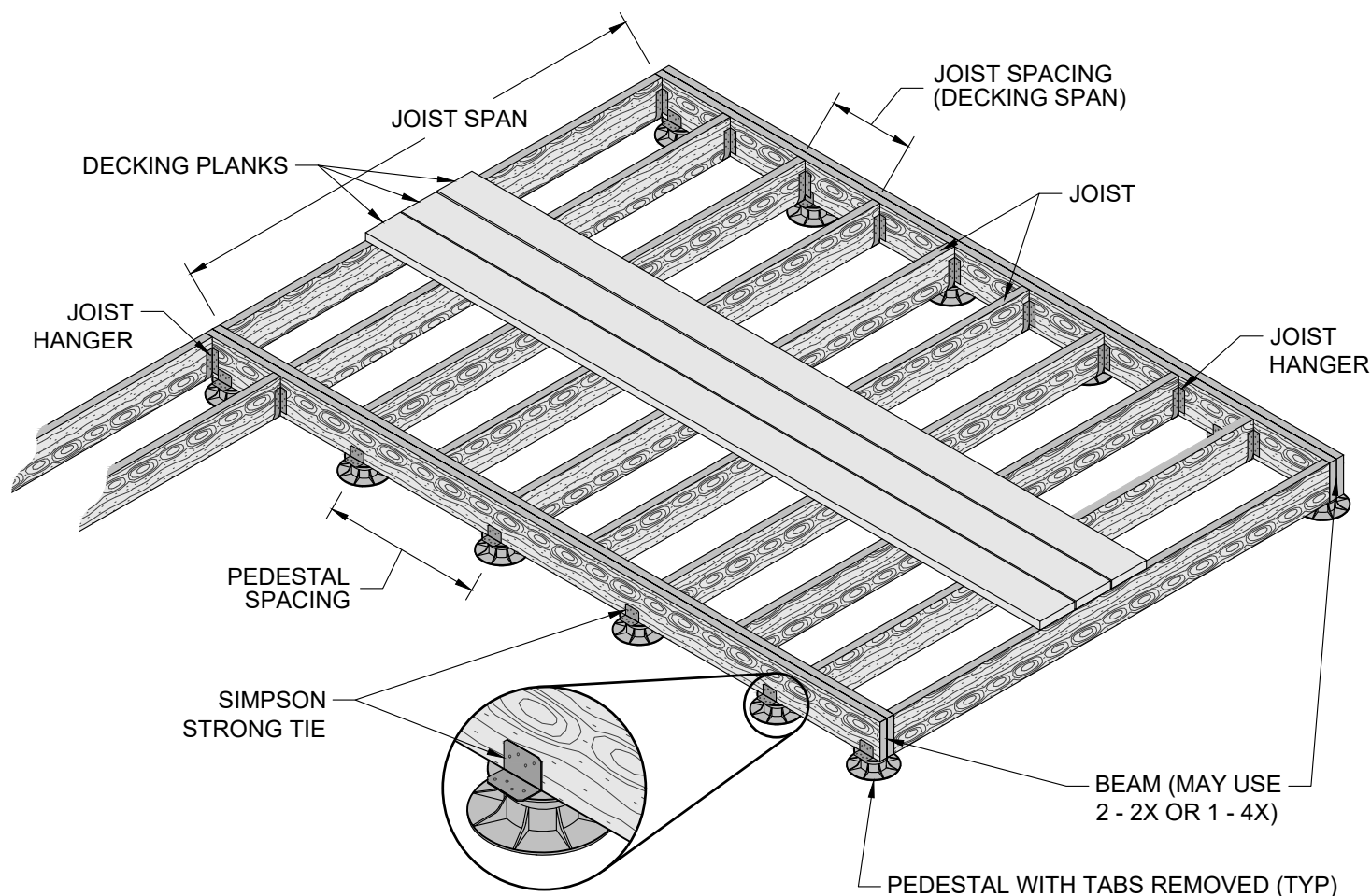
PEDESTALS ON FFBs (FLOATING FOUNDATION BASES)

GENERAL NOTES: APPLY TO ALL OF THE ABOVE PRODUCTS:

1. INSTALLATION MUST BE COMPLETED IN ACCORDANCE WITH MANUFACTURER SPECIFICATIONS.
2. DRAWINGS NOT TO SCALE.
3. CONTRACTOR'S NOTE: FOR PRODUCT AND COMPANY INFORMATION VISIT: www.belgardcommercial.com

GENERAL NOTES: APPLY TO ALL OF THE BELOW PRODUCTS:

1. INSTALLATION MUST BE COMPLETED IN ACCORDANCE WITH MANUFACTURER SPECIFICATIONS.
2. DRAWINGS NOT TO SCALE.
3. CONTRACTOR'S NOTE: FOR PRODUCT AND COMPANY INFORMATION VISIT: www.belgardcommercial.com

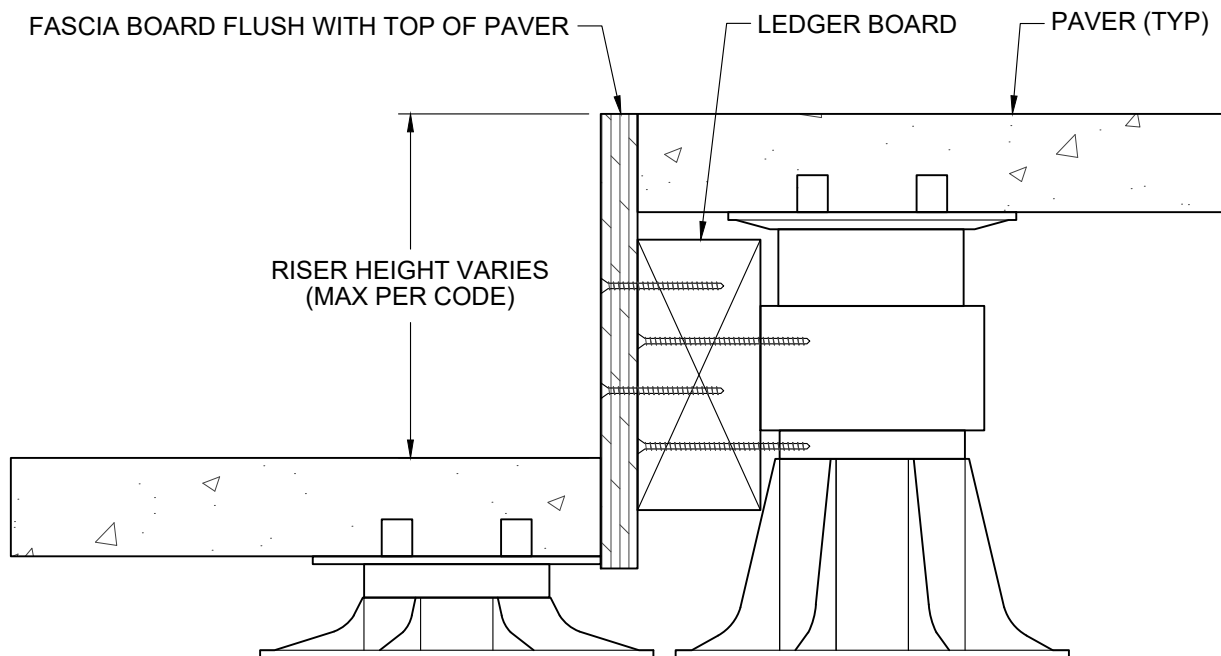


12" O.C. JOIST SPACING (DECKING SPAN)			
JOIST SIZE	JOIST SPAN	BEAM SIZE	PEDESTAL SPACING
2X6	10' - 0"	4x6 OR (2) 2x6	24" O.C.
2X8	13' - 2"	4x8 OR (2) 2x8	24" O.C.
2X10	16' - 10"	4X10 OR (2) 2x10	24" O.C.
16" O.C. JOIST SPACING (DECKING SPAN)			
JOIST SIZE	JOIST SPAN	BEAM SIZE	PEDESTAL SPACING
2X6	9' - 1"	4x6 OR (2) 2x6	24" O.C.
2X8	12' - 0"	4x8 OR (2) 2x8	24" O.C.
2X10	15' - 2"	4X10 OR (2) 2x10	24" O.C.
24" O.C. JOIST SPACING (DECKING SPAN)			
JOIST SIZE	JOIST SPAN	BEAM SIZE	PEDESTAL SPACING
2X6	7' - 11"	4x6 OR (2) 2x6	24" O.C.
2X8	10' - 2"	4x8 OR (2) 2x8	24" O.C.
2X10	12' - 5"	4X10 OR (2) 2x10	24" O.C.

NOTE: DECKING AND JOIST SPANNING CAPABILITIES VARY DEPENDING ON THE TYPE OF WOOD OR COMPOSITE MATERIALS BEING USED. CODE REQUIREMENTS ALSO VARY PER LOCATION. FOR THESE REASONS, THIS DIAGRAM AND CHART ARE FOR CONVENIENCE ONLY, AND IT IS THE INSTALLERS RESPONSIBILITY TO ENSURE THE DECK MEETS CODE REQUIREMENTS.

***CHARTS ARE SHOWN USING HEM-FIR #2 LUMBER OR BETTER.

NOTE: THE WOOD LEDGER IS FASTENED TO THE PEDESTAL AND / OR COUPLER WITH DECK SCREWS. THE FASCIA BOARD IS FASTENED TO THE LEDGER BOARD WITH FINISH SCREWS AND WORKS AS CONTAINMENT TO PREVENT LATERAL MOVEMENT OF THE PAVERS OR DECK TILES.



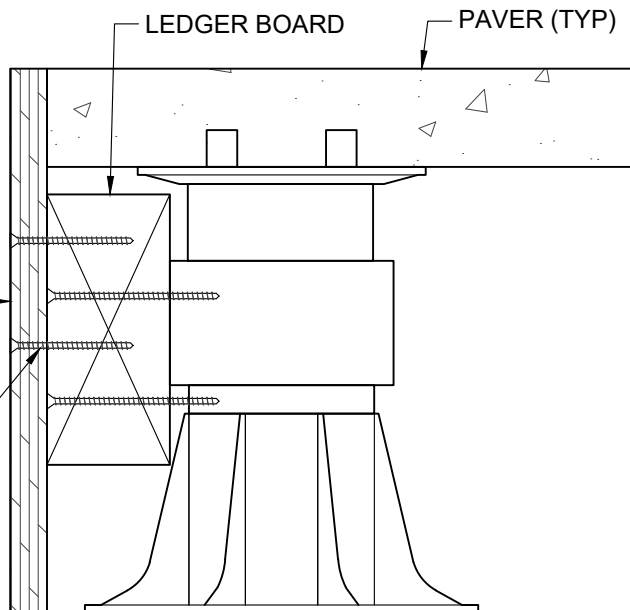
GENERAL NOTES: APPLY TO ALL OF THE ABOVE PRODUCTS

1. INSTALLATION MUST BE COMPLETED IN ACCORDANCE WITH MANUFACTURER SPECIFICATIONS.
2. DRAWINGS NOT TO SCALE.
3. CONTRACTOR'S NOTE: FOR PRODUCT AND COMPANY INFORMATION VISIT: www.belgardcommercial.com
4. SEE THE SLOPE COMPENSATION DETAIL SHEET BP01 FOR SLOPE COMPENSATION OPTIONS.

NOTE: BOTTOM OF FASCIA BOARD MAY BE CUT ABOVE SUBSTRATE TO ALLOW WATER TO ESCAPE. FASCIA BOARD MUST FULLY CONTAIN PAVERS, AND MUST TIE BACK INTO A BUILDING WALL OR PARAPET.

FASCIA BOARD FLUSH WITH TOP OF PAVER

STAINLESS STEEL OR DECKING SCREWS



WOOD FASCIA CONTAINMENT

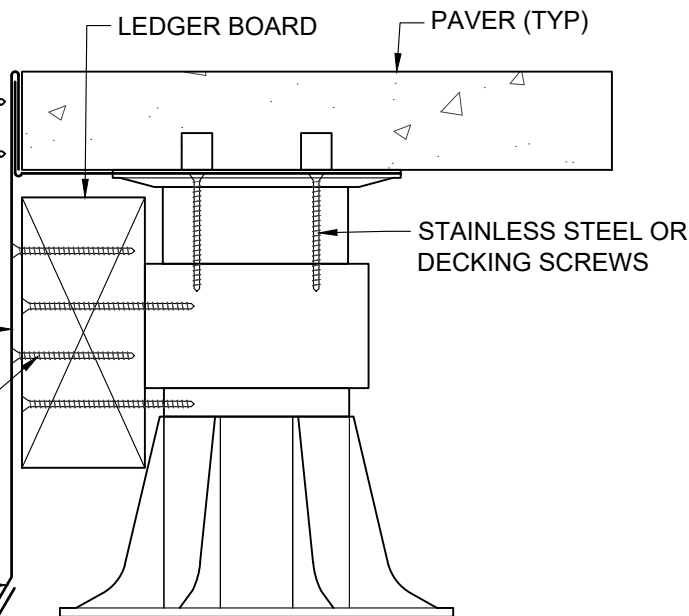
NOTE: BOTTOM OF METAL CONTAINMENT MAY BE BENT OR CUT ABOVE SUBSTRATE TO ALLOW WATER TO ESCAPE. METAL CONTAINMENT MUST FULLY CONTAIN PAVERS, AND MUST TIE BACK IN TO A BUILDING WALL OR PARAPET.

FASTENERS PLACED AT JOINTS BETWEEN PAVERS

TWO PIECE EDGE METAL

STAINLESS STEEL OR DECKING SCREWS

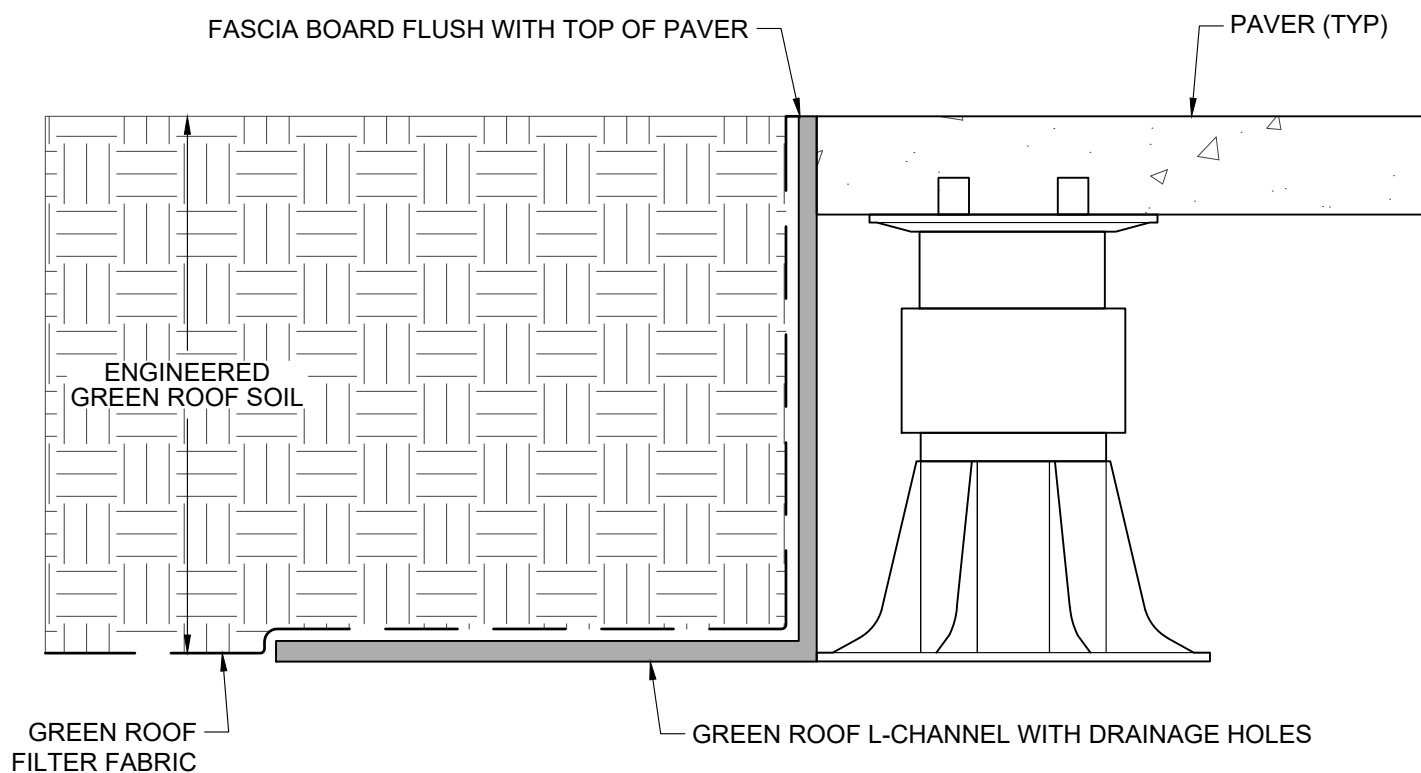
22 GA. GALVANIZED OR PRE-FINISHED METAL



METAL FLASHING CONTAINMENT

GENERAL NOTES: APPLY TO ALL OF THE ABOVE PRODUCTS

1. INSTALLATION MUST BE COMPLETED IN ACCORDANCE WITH MANUFACTURER SPECIFICATIONS.
2. DRAWINGS NOT TO SCALE.
3. CONTRACTOR'S NOTE: FOR PRODUCT AND COMPANY INFORMATION VISIT: www.belgardcommercial.com



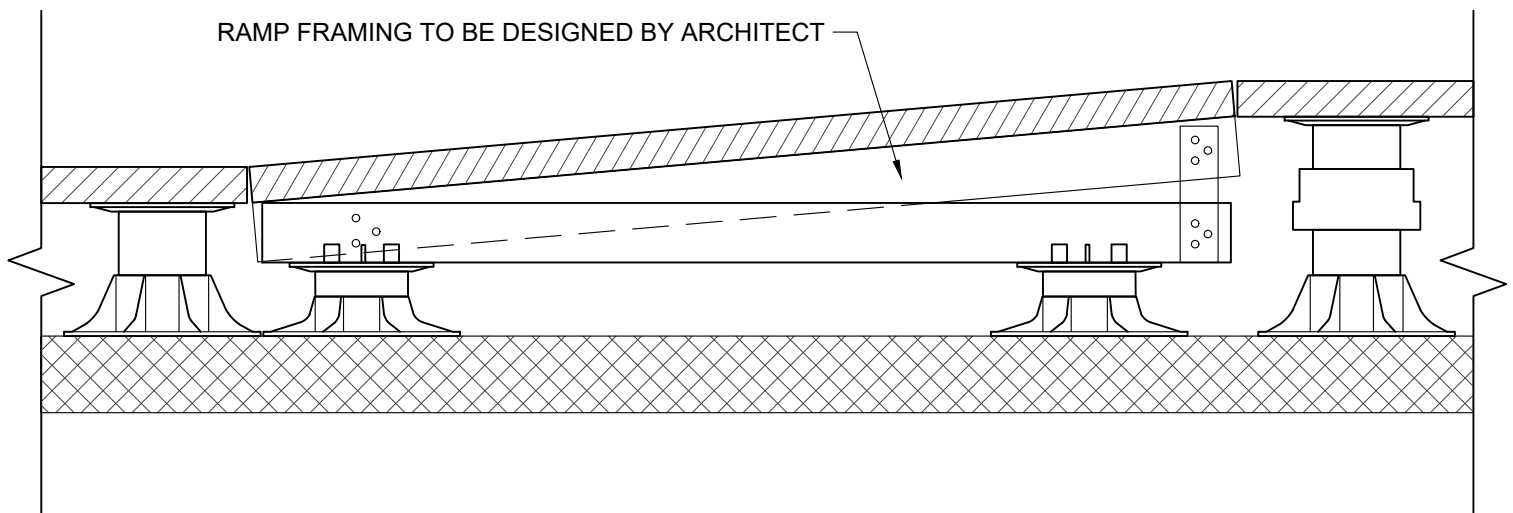
GREEN ROOF PERIMETER CONTAINMENT

GENERAL NOTES: APPLY TO ALL OF THE ABOVE PRODUCTS

1. INSTALLATION MUST BE COMPLETED IN ACCORDANCE WITH MANUFACTURER SPECIFICATIONS.
2. DRAWINGS NOT TO SCALE.
3. CONTRACTOR'S NOTE: FOR PRODUCT AND COMPANY INFORMATION VISIT: www.belgardcommercial.com

NOTES:

1. VERIFY LOCAL CODE REQUIREMENTS FOR ALL RAMP AND HANDRAIL COMPONENTS AND DESIGN CRITERIA.
2. PROVIDE PERIMETER CONTAINMENT FOR ALL EDGES SURROUNDING RAMP AND DECK.
3. RAMPS ARE INTENDED FOR WHEELCHAIR AND PEDESTRIAN TRAFFIC ONLY. VEHICULAR AND MECHANICAL TRAFFIC OF ANY KIND IS STRICTLY PROHIBITED.



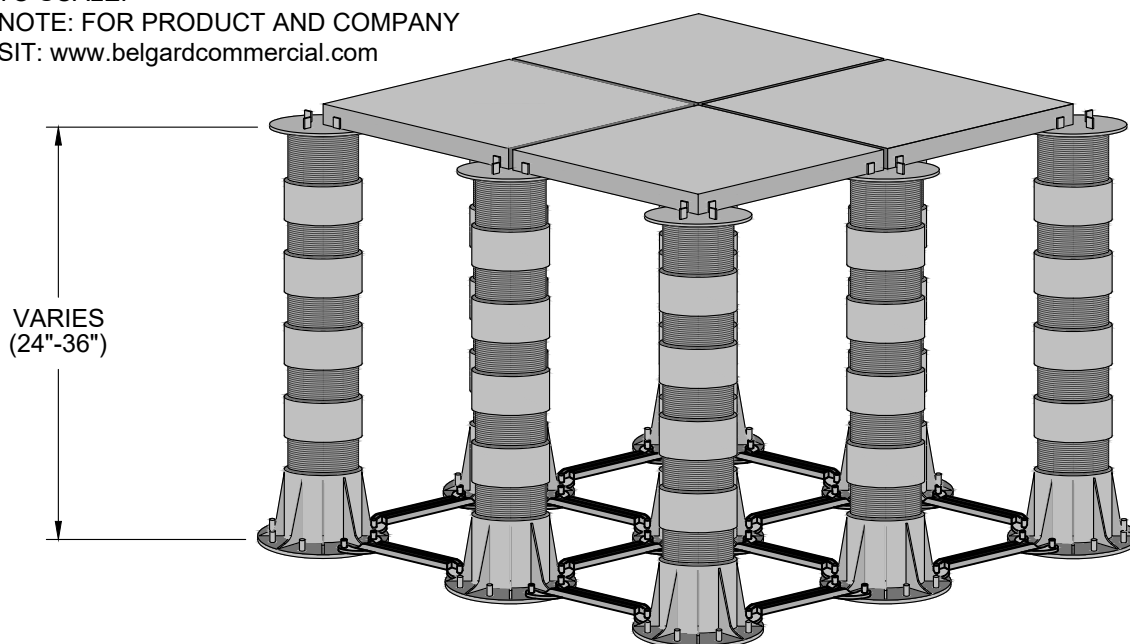
RAMP CONSTRUCTION ON PEDESTALS

GENERAL NOTES: APPLY TO ALL OF THE ABOVE PRODUCTS:

1. INSTALLATION MUST BE COMPLETED IN ACCORDANCE WITH MANUFACTURER SPECIFICATIONS.
2. DRAWINGS NOT TO SCALE.
3. CONTRACTOR'S NOTE: FOR PRODUCT AND COMPANY INFORMATION VISIT: www.belgardcommercial.com

GENERAL NOTES: APPLY TO ALL OF THE BELOW PRODUCTS:

1. INSTALLATION MUST BE COMPLETED IN ACCORDANCE WITH MANUFACTURER SPECIFICATIONS.
2. DRAWINGS NOT TO SCALE.
3. CONTRACTOR'S NOTE: FOR PRODUCT AND COMPANY INFORMATION VISIT: www.belgardcommercial.com

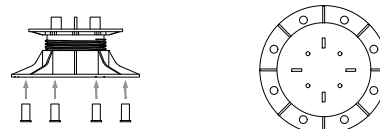
**NOTES:**

SCREWJACK PEDESTALS MUST BE BRACED FOR STABILITY TO ACCOMMODATE HEIGHTS IN EXCESS OF 24" UP TO A MAXIMUM OF 36". STRUCTURAL PERIMETER CONTAINMENT, WITH NO MORE THAN 1/8" WIDTH SPACING, ON ALL SIDES OF THE PEDESTAL DECK SYSTEM IS REQUIRED.

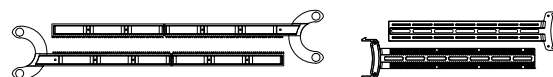
IMPORTANT: REFER TO SCREWJACK PRODUCT SPECIFICATIONS TO ENSURE PROPER USE AND INSTALLATION. FIND SCREWJACK SPECIFICATIONS AT www.BISONIP.com.

BRACING ASSEMBLY INSTRUCTIONS

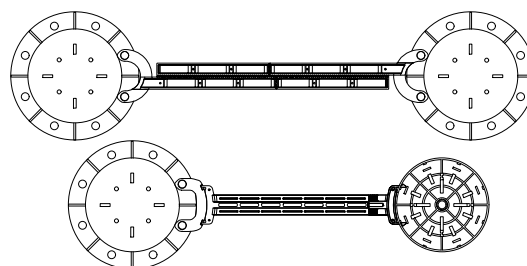
1. INSERT A PEG INTO EACH OF THE 8 HOLES IN THE BOTTOM OF EACH ADJUSTABLE PEDESTAL TO RECEIVE BRACING, AND CLICK THEM INTO PLACE.



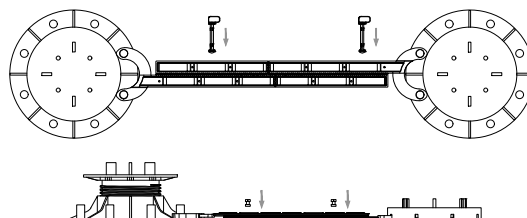
2. DETERMINE HOW LONG THE BRACE SHOULD BE BASED ON THE SIZE OF THE PAVER. BRACES MAY NEED TO BE CUT DOWN FOR SHORTER DISTANCES.

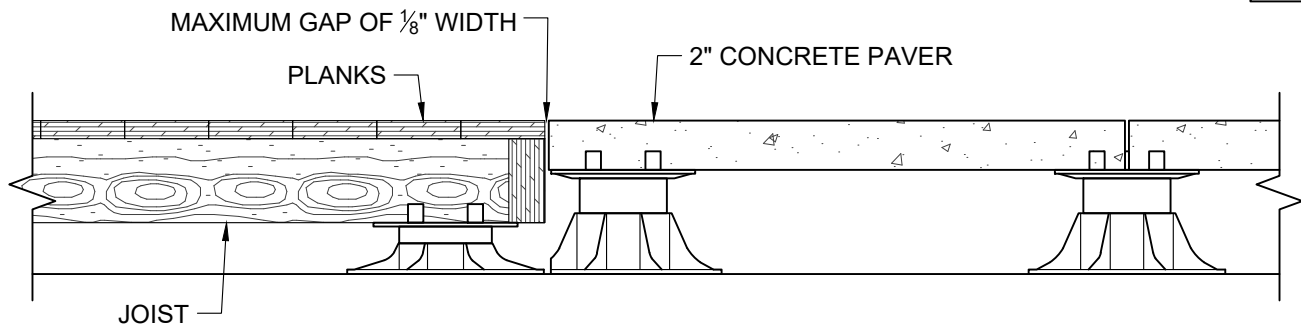


3. SNAP THE BISON BRACE ONTO THE PEGS IN EACH ADJUSTABLE PEDESTAL. FOR FIXED HEIGHT PEDESTALS, SNAP THE BB-FIXED HEIGHT INTO THE SIDE OF AN HD50 OR HD75. USE A BB-CONNECT TO ATTACH THE BB-FIXED HEIGHT TO AN ADJUSTABLE PEDESTAL.

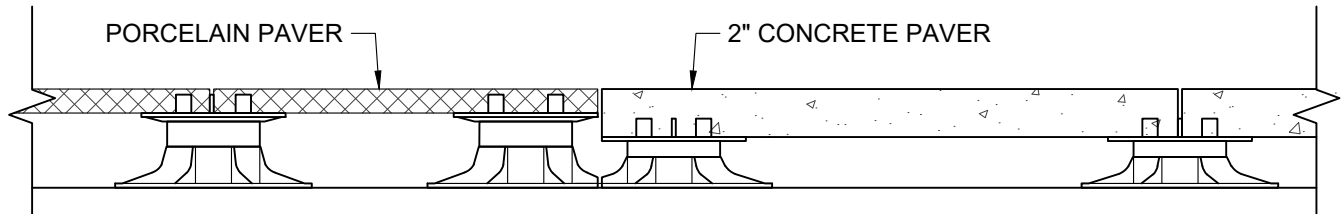


4. LOCK THE BRACING ARMS TOGETHER BY INSERTING BB-LATCHES INTO THE SIDE OF EACH BISON BRACE OR BB-SCREWS INTO THE TOP OF EACH BB-FIXED HEIGHT, AND TWIST 90 DEGREES.

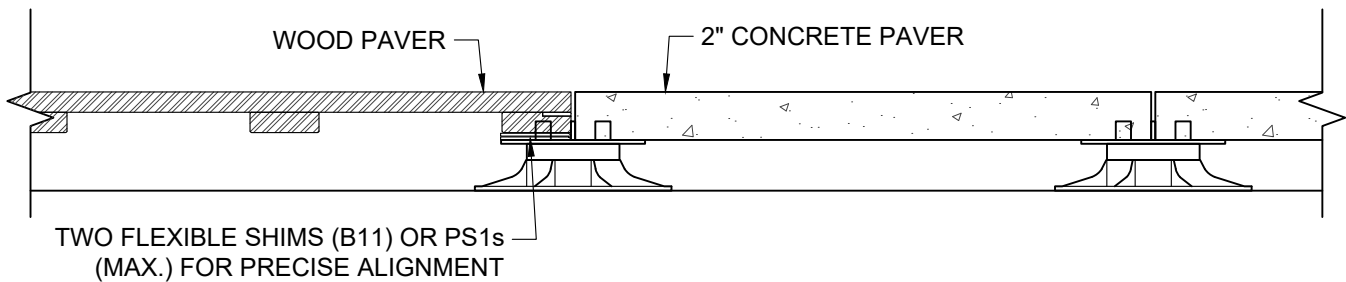




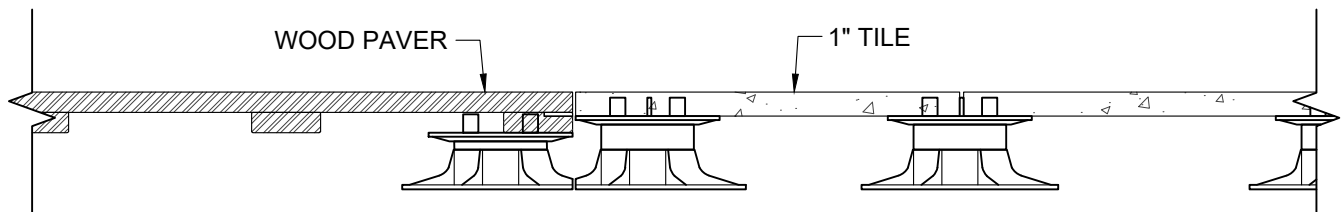
JOIST AND PLANK WITH 2" CONCRETE PAVER



PORCELAIN PAVER WITH 2" CONCRETE PAVER



WOOD PAVER WITH 2" CONCRETE PAVER



WOOD PAVER WITH 1" TILE

GENERAL NOTES: APPLY TO ALL OF THE ABOVE PRODUCTS

1. INSTALLATION MUST BE COMPLETED IN ACCORDANCE WITH MANUFACTURER SPECIFICATIONS.
2. DRAWINGS NOT TO SCALE.
3. CONTRACTOR'S NOTE: FOR PRODUCT AND COMPANY INFORMATION VISIT: www.belgardcommercial.com